



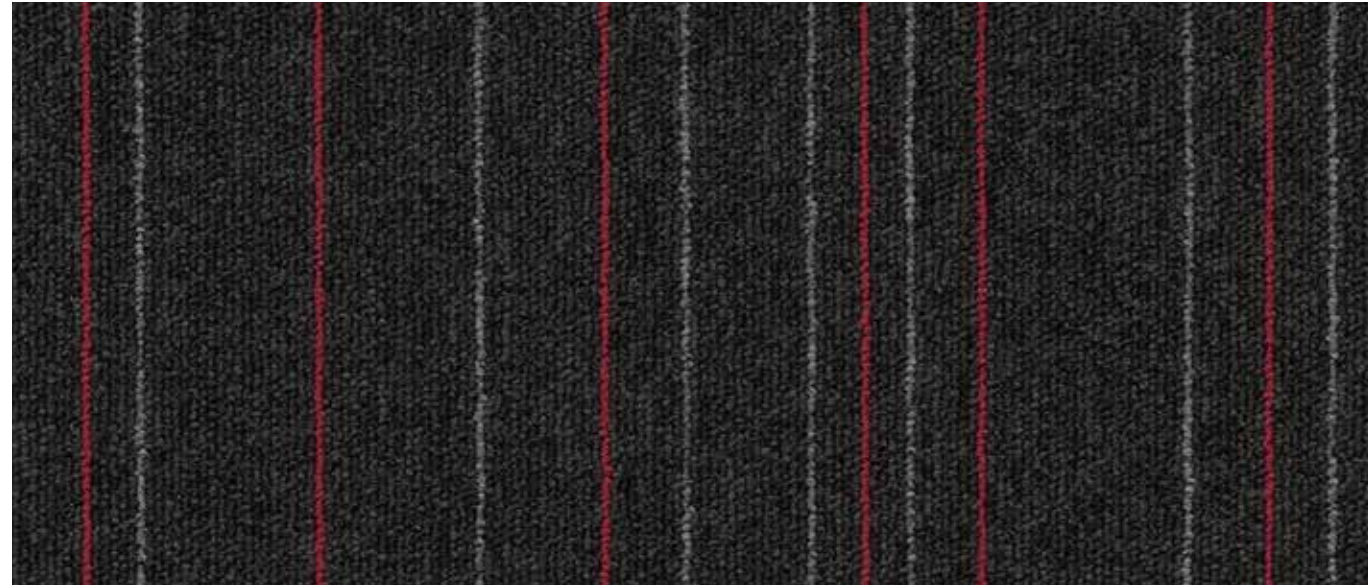
The Place for Commercial Carpet Tiles



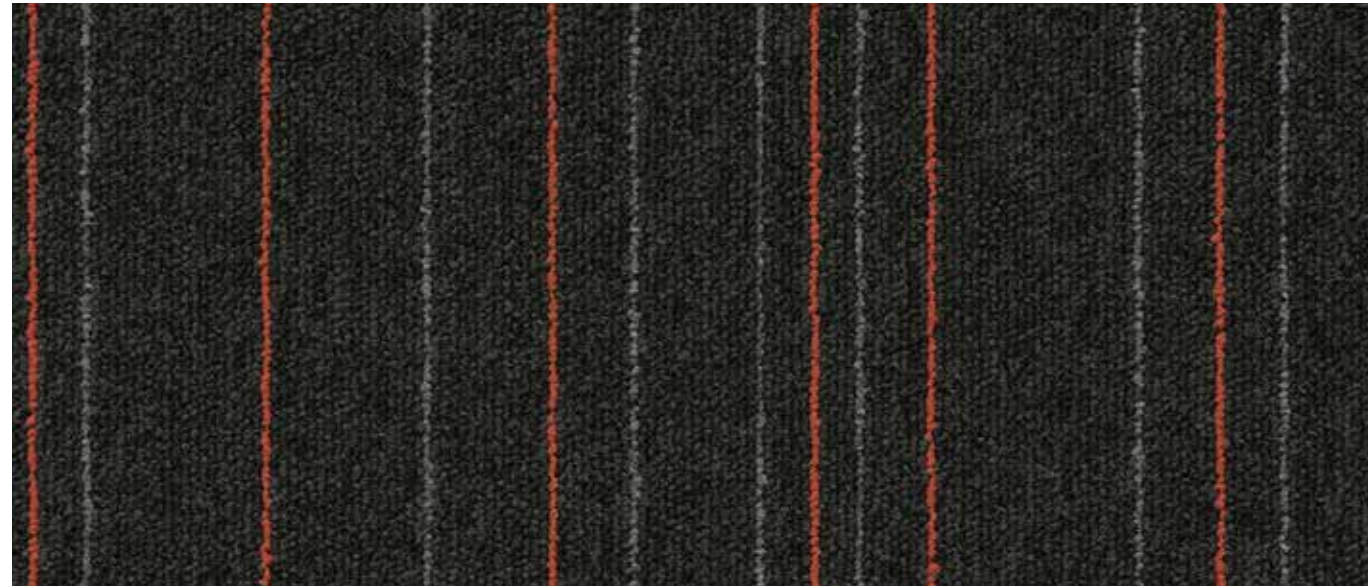
Light Speed

Bright linear carpet tile

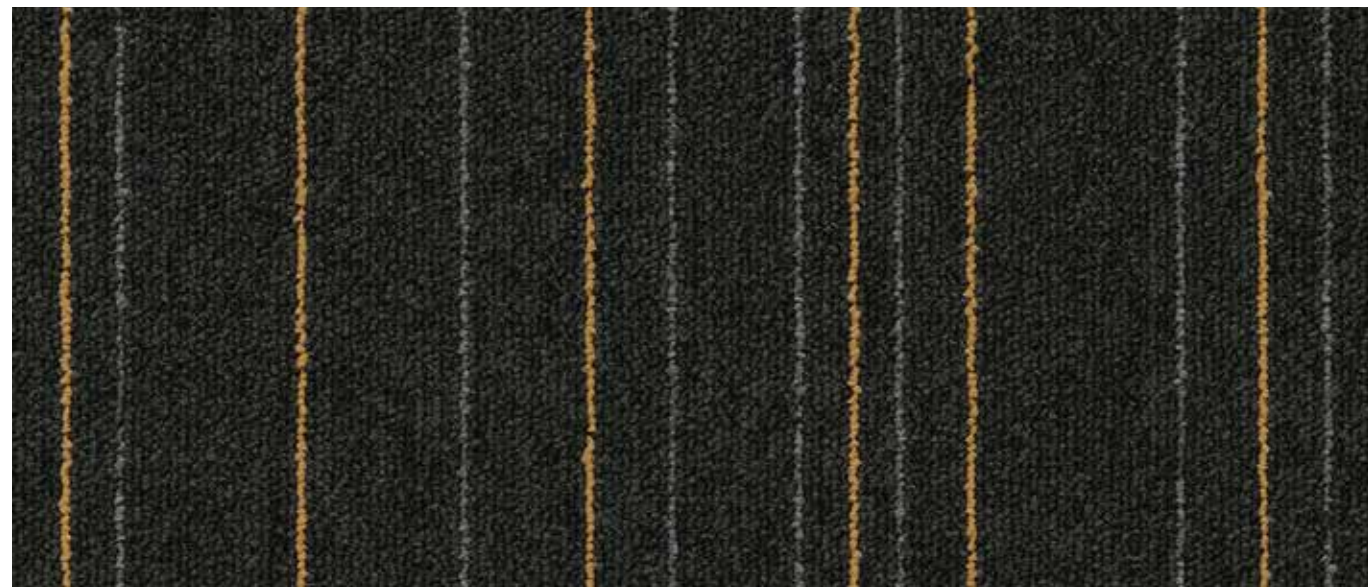
Light Speed



Velocity



Motion



Limit

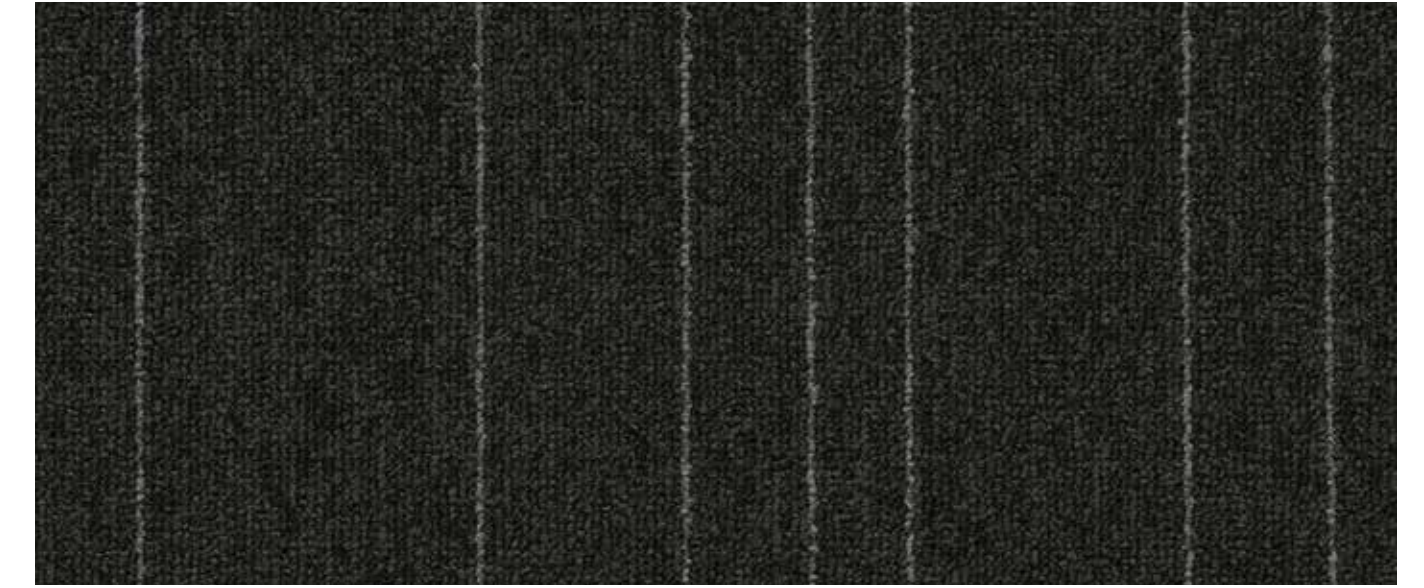
Bright linear carpet tile



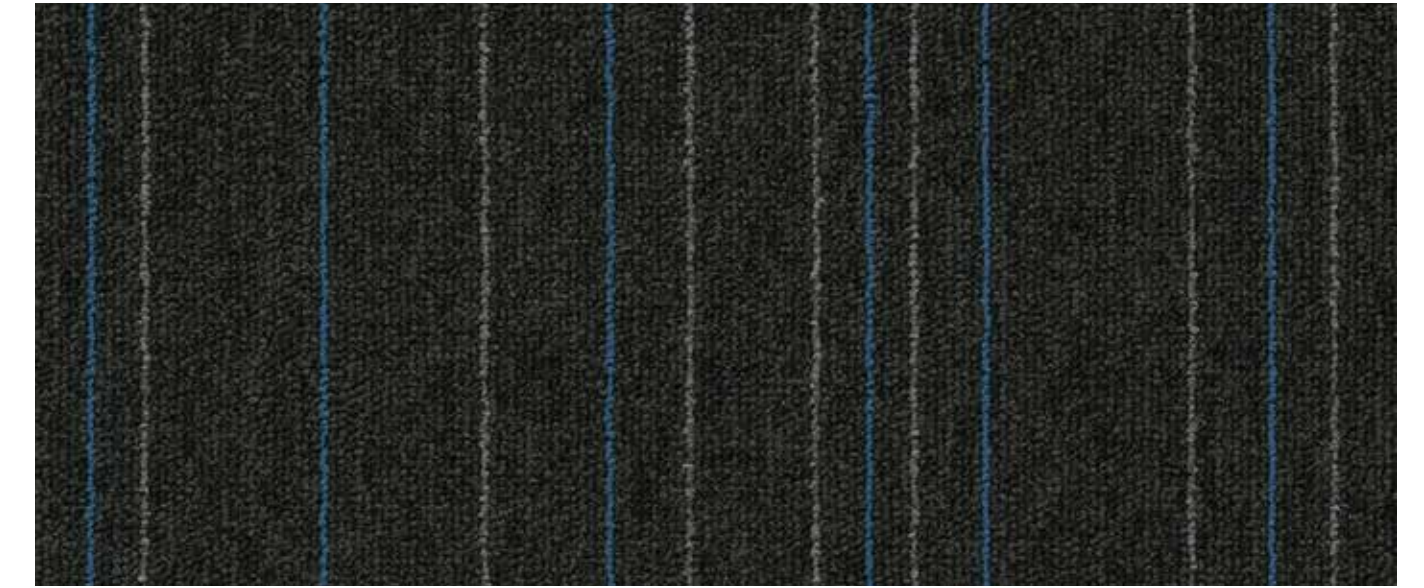
Rapid



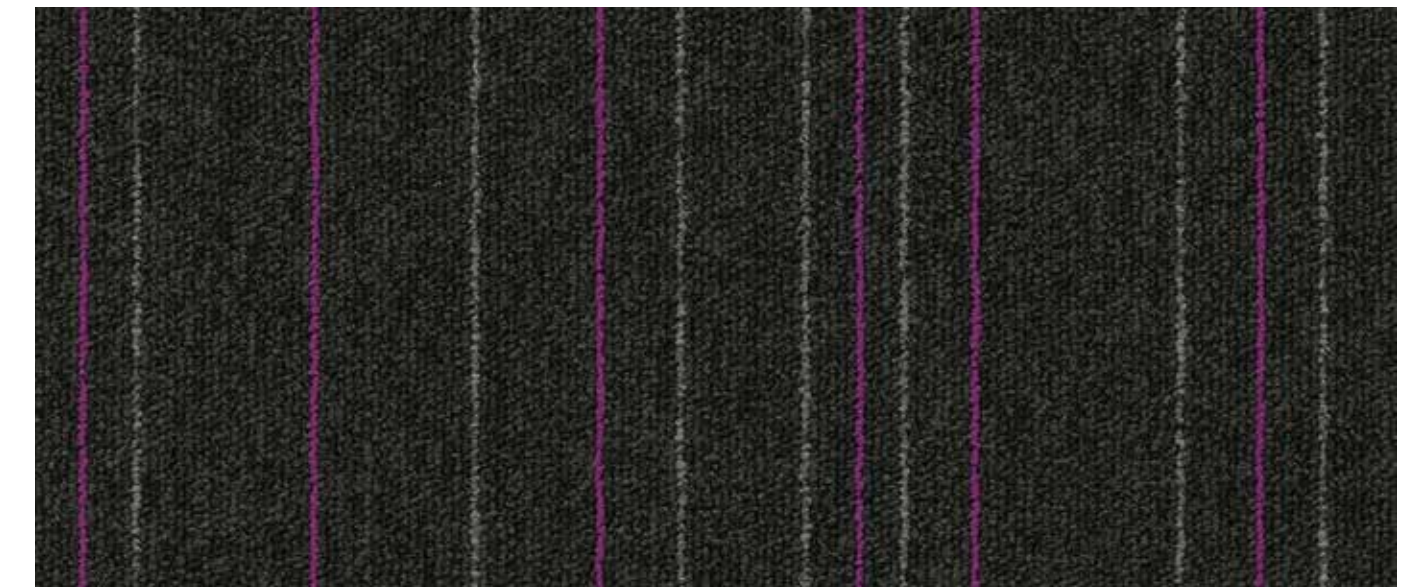
Connect



Force



Momentum



Pace

Light Speed Specification

COMPOSITION

Construction	ISO2424	Tufted 1/10th Loop Pile
Pile Fibre	ISO2076	Aqualon 100% PA6 Nylon
Primary Backing	ISO2424	Non-woven Polyester
Secondary Backing	ISO2424	Bitumen with glass fibre 3kg/m ²
Pile Height	ISO1766	2.9 mm ± 0.5mm
Total Height	ISO1765	6.4 mm ± 0.5mm
Pile Weight	ISO1958	540 gr/m ² ± 5%
Total Weight	ISO8543	4300 gr/m ² ± 10%
Pile Density	ISO1763	156,000 tufts/m ² ± 5%
Tile Size	EN994	50 x 50 cm
Tiles per Box		20 tiles per box (5m ²)

CLASSIFICATION

Flammability (Fire Spread EN13501)	ISO11925	Fs ≤ 150mm within 20 seconds
Flammability (Radiant Panel EN13501)	ISO9239	B _{fl} -S1
Flammability (Hot Metal Nut)	BS4790	Low radius effects of ignition
Wear Resistance (Castor Chair Test)	ISO4918	Pass ≥ 2.4 (A – Continuous Use)
Electrical Vertical Resistance	ISO10965	Pass ≤ 10 ⁹ Ω
Electrostatic Propensity (Stroll Test)	ISO6356	Pass < 2.0kV
Slip Resistance	EN13893	DS
Dimensional Stability	EN986	Pass < 0.2%
Acoustic Impact Noise Reduction	ISO717	25dB
Sound Absorption	ISO354	500Hz-0.07as, 1000Hz-0.19as, 2000Hz-0.29as, 4000Hz-0.34as
Colour Fastness – Light (CIELAB)	ISO105	≥7
Colour Fastness – Rubbing (CIELAB)	ISO105	≥4
Colour Fastness – Water (CIELAB)	ISO105	≥4
Classification for Use	ISO10874	Class 33 Commercial Heavy
Luxury Class Rating	EN1307	LC1

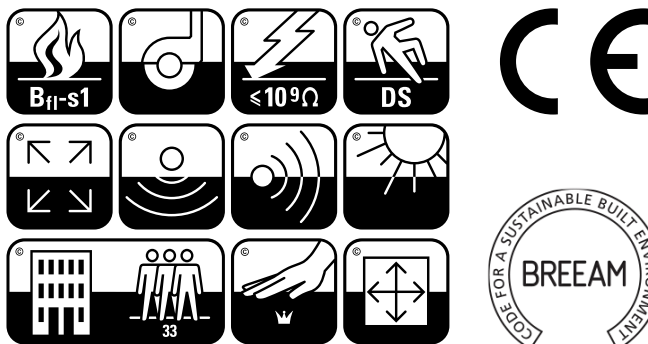
ENVIRONMENTAL

BREEAM A Rating

WARRANTY

10 Year Wear Warranty

CERTIFICATION



INSTALLATION



© The Floor Hub. Specifications are subject to normal manufacturing tolerances and may be changed without prior notice. Copies of actual test results are available on request.

The Floor Hub HQ & Trade Bar, No 3, 14 Greycaine Road, Watford, Herts. WD24 7GP
 The Floor Hub Showroom, The Vault, 8 - 11 St John's Lane, Clerkenwell, London. EC1M 4BF
 Tel: 01923 211151 Email: hello@thefloorhub.co.uk